

## INSTRUCTIONS FOR USE

Ref: APEX-IFU-KND0950

Description Kidney Dish 950ml Disposable Medical Pulp

Product Part Number KND0950

Ordering Item Code 100APPKND0950

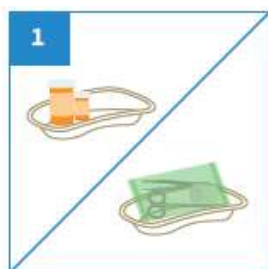
Product Image



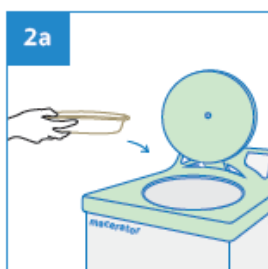
Intended Use

For the purpose of patient treatment and monitoring, the Kidney Dish is made from eco-friendly biodegradable kraft material, intended for use as multi-purpose dish to carry surgical instrument, dressings, wipes, creams and other medical items.

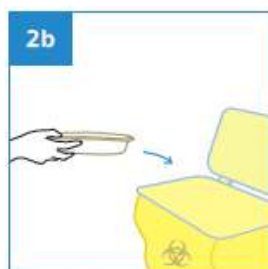
User Guide



Place medical items on Kidney Dish.



After use, dispose the empty Kidney Dish into macerator or into appropriate waste bins.



### Disclaimer:

All products specifications, illustrations, drawings, images, dimensions, performance data and other information on our Instructions for Use or made available by us are subjected to change without notice and they are intended to represent no more than a general illustration of the products intended use and their features and do not constitute a warranty or representation by us that the products will conform with the same. Products that are shipped to you may vary from these images or specifications.

Rev2(1123)

