

# INSTRUMENT TRAY 1000ML

Eco-Friendly Medical Pulp



Made from  
**BIODEGRADABLE**  
Sugarcane Bagasse

Designed for Single Use to  
Reduce Risk of Infection

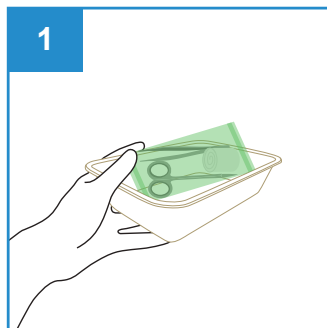


## Instrument Tray 1000ml Eco-Friendly Medical Pulp

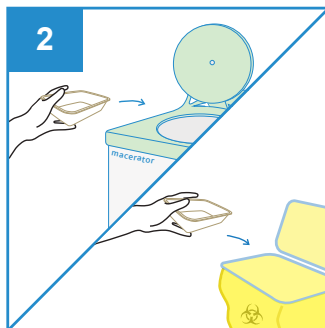
The Food Grade Instrument Tray with 1000ml rated capacity is made from eco-friendly biodegradable sugarcane bagasse, intended for use as multi-purpose tray to carry surgical instruments, dressings, wipes, creams and other medical items. It is designed with smooth inner finishing and meshed outer surface for extra grip.

Manufactured as single-use disposable medical pulp to meet the requirement to hold water and/or human waste for a minimum period of four hours at an initial temperature of 35°C. Suitable for disposal into macerator which complies with PAS29:1999 “Disposable Pulp For Use in Healthcare”.

### User Guide



Place surgical items on the Instrument Tray.



After use, dispose the Instrument Tray into macerator or appropriate waste bins.

### Features

- Large tray ideal for surgical procedures
- Able to retain water for at least 4 hours
- Non-sterile, single use tray
- Meshed outer surface for better grip
- Made from sugarcane bagasse
- Biodegradable and compostable
- Can be disposed into macerator
- Manufactured in accordance with:
  - EU Regulation No. 1935/2004 Materials intended to come into contact with food
  - US FDA 21 CFR 176.170 Components of paper and paperboard in contact with aqueous and fatty foods.

### Caution

- Do not pour alcohol based solutions into the instrument tray.



Single-Use



Macerator Friendly



Eco-Friendly



Water Retention



Stackable



Recycled



No Direct Sunlight



Keep Dry

### PRODUCT DESCRIPTION

Kidney Dish Food Grade 950ml

### PRODUCT SIZE

195 x 135 x 48mm

### PACKAGING

500 pcs per carton

### CARTON DIMENSION

420 x 210 x 330mm

UDI-DI: 95510204302124

ORDER CODE: 101xxxTIS1000 (xxx to be assigned upon ordering)



**APEX PULP PTE LTD**  
Company Registration No.: 200715327H  
132 Joo Seng Road #04-01. Singapore 368358  
Tel: +65 6817 8969 | Fax: +65 6636 9813  
www.apexpulp.com | sales@apexpulp.com

DOC. REF: APEX-PIB-TIS1000  
Date of Revision: 09/01/2026  
Revision: 2