



**APEX PULP**

Manufacturer of Moulded Pulps

# INJECTION TRAY 350ML

## Eco-Friendly Medical Pulp



Made from  
**BIODEGRADABLE**  
Sugarcane Bagasse

Designed for Single Use to  
Reduce Risk of Infection

The Food Grade Injection Tray with 350ml rated capacity is made from eco-friendly biodegradable sugarcane bagasse, intended for use as multi-purpose tray to carry syringes and other medical items. It is designed with smooth inner finishing and meshed outer surface for extra grip.

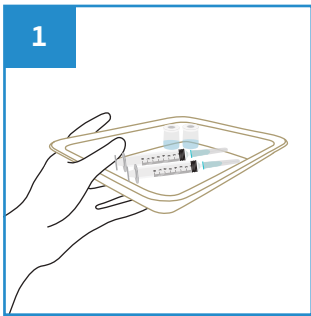
Manufactured as single-use disposable medical pulp to meet the requirement to hold water and/or human waste for a minimum period of four hours at an initial temperature of 35°C. Suitable for disposal into macerator which complies with PAS29:1999 "Disposable Pulp For Use in Healthcare".



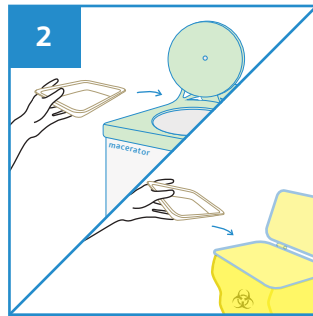
## Features

- Ideal for surgical procedures
- Able to retain water for at least 4 hours
- Non-sterile, single use tray
- Meshed outer surface for better grip
- Made from sugarcane bagasse
- Biodegradable and compostable
- Can be disposed into macerator
- Manufactured in accordance with:
  - EU Regulation No. 1935/2004  
Materials intended to come into contact with food
  - US FDA 21 CFR 176.170  
Components of paper and paperboard in contact with aqueous and fatty foods.

## User Guide



Place surgical items on the Injection Tray.



After use, dispose the Injection Tray into macerator or appropriate waste bins.

## Caution

- Do not pour alcohol based solutions into the Injection Tray.



Stackable



Water Retention



Macerator Friendly



Eco-Friendly



Recyclable

| PRODUCT DESCRIPTION               | PRODUCT SIZE      | PACKAGING          | CARTON DIMENSION   | PRODUCT CODE  |
|-----------------------------------|-------------------|--------------------|--------------------|---------------|
| Injection Tray 350ml (Food Grade) | 196 x 147 x 27 mm | 500 pcs per carton | 420 x 210 x 330 mm | 101APPTIJ0350 |



Manufactured in accordance with PAS29:1999  
Disposable Pulp Products For Use in Healthcare

Rev0(0722)EN

