

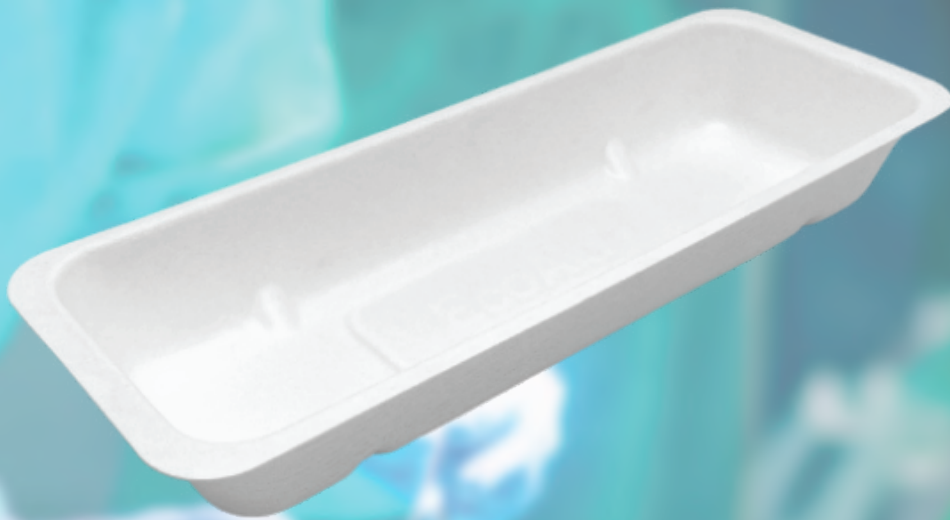


APEX PULP

Manufacturer of Moulded Pulps

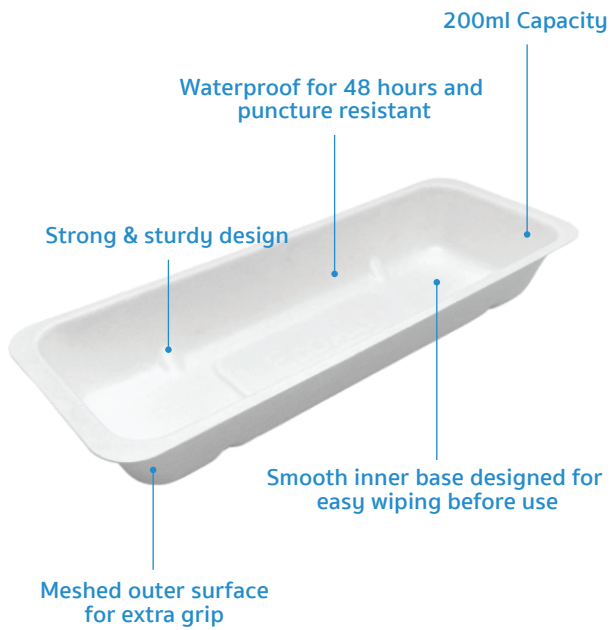
INJECTION TRAY 200ML

Eco-Friendly Medical Pulp



Made from
BIODEGRADABLE
Sugarcane Bagasse

Designed for Single Use to
Reduce Risk of Infection



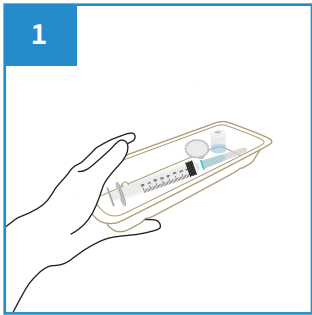
The Food Grade Injection Tray with 200ml rated capacity is made from eco-friendly biodegradable sugarcane bagasse, intended for use as multi-purpose tray to carry syringes and other medical items. It is designed with smooth inner finishing and meshed outer surface for extra grip.

Manufactured as single-use disposable medical pulp to meet the requirement to hold water and/or human waste for a minimum period of four hours at an initial temperature of 35°C. Suitable for disposal into macerator which complies with PAS29:1999 "Disposable Pulp For Use in Healthcare".

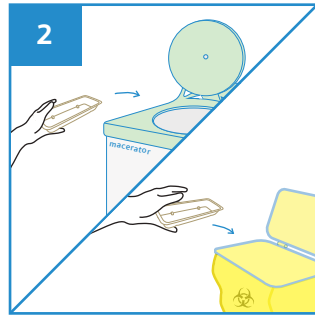
Features

- Ideal for surgical procedures
- Able to retain water for at least 4 hours
- Non-sterile, single use tray
- Meshed outer surface for better grip
- Made from sugarcane bagasse
- Biodegradable and compostable
- Can be disposed into macerator
- Manufactured in accordance with:
 - EU Regulation No. 1935/2004
Materials intended to come into contact with food
 - US FDA 21 CFR 176.170
Components of paper and paperboard in contact with aqueous and fatty foods.

User Guide



Place surgical items on the Injection Tray.



After use, dispose the Injection Tray into macerator or appropriate waste bins.

Caution

- Do not pour alcohol based solutions into the Injection Tray.



PRODUCT DESCRIPTION	PRODUCT SIZE	PACKAGING	CARTON DIMENSION	PRODUCT CODE
Injection Tray 200ml (Food Grade)	200 x 75 x 30 mm	400 pcs per carton	400 x 300 x 230 mm	101APPTIJ0200



Manufactured in accordance with PAS29:1999
Disposable Pulp Products For Use in Healthcare

Rev0(0722)EN

