

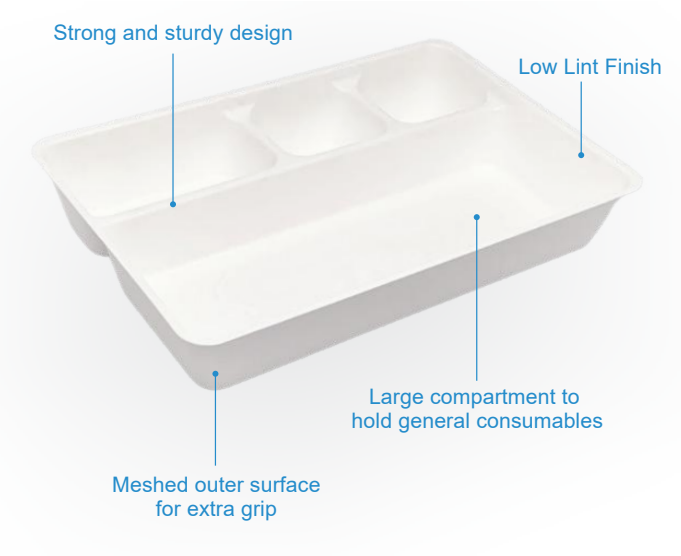
# PROCEDURE TRAY 4-COMPARTMENT

## Eco-Friendly Medical Pulp

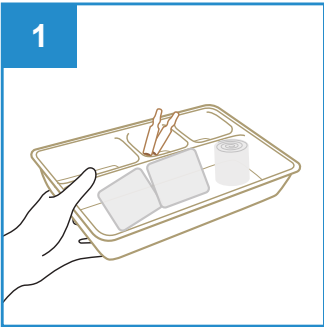


Made from  
**BIODEGRADABLE**  
Sugarcane Bagasse

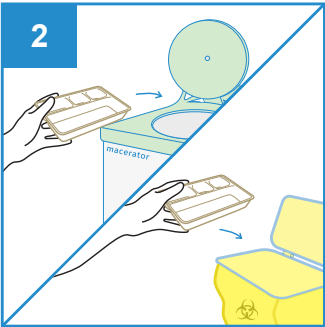
Designed for Single Use to  
Reduce Risk of Infection



User Guide



Place surgical items on the Procedure Tray.



After use, dispose the Procedure Tray into macerator or appropriate waste bins.

Procedure Tray 4-Compartment Tray  
Eco-Friendly Medical Pulp

The Food Grade Procedure Tray with 4-Compartment is made from eco-friendly biodegradable sugarcane bagasse, intended for use as multi-purpose tray to organise surgical instruments, ampoules, dressings, wipes, creams and other medical items with two small, one medium and one large compartments. It is designed with smooth inner finishing and meshed outer surface for extra grip.

Manufactured as single-use disposable medical pulp to meet the requirement to hold water and/or human waste for a minimum period of four hours at an initial temperature of 35°C. Suitable for disposal into macerator which complies with PAS29:1999 “Disposable Pulp For Use in Healthcare”.

Features

- Consist of four deep compartments, ideal for surgical procedures
- Able to retain water for at least 4 hours
- Non-sterile, single use tray
- Meshed outer surface for better grip
- Made from sugarcane bagasse
- Biodegradable and compostable
- Can be disposed into macerator
- Manufactured in accordance with:
  - EU Regulation No. 1935/2004  
Materials intended to come into contact with food
  - US FDA 21 CFR 176.170  
Components of paper and paperboard in contact with aqueous and fatty foods.

Caution

- Do not pour alcohol based solutions into the compartment tray.



Single-Use



Macerator Friendly



Eco-Friendly



Water Retention



Stackable



Recycled



No Direct Sunlight



Keep Dry

PRODUCT DESCRIPTION	PRODUCT SIZE	PACKAGING	CARTON DIMENSION
Procedure Tray 4-Compartment 2000ml	270 x 180 x 45mm	100 pcs per carton	370 x 285 x 185mm

UDI-DI: 95510204301998  
ORDER CODE: 101xxxT4C2000 (xxx to be assigned upon ordering)

