



**APEX PULP**

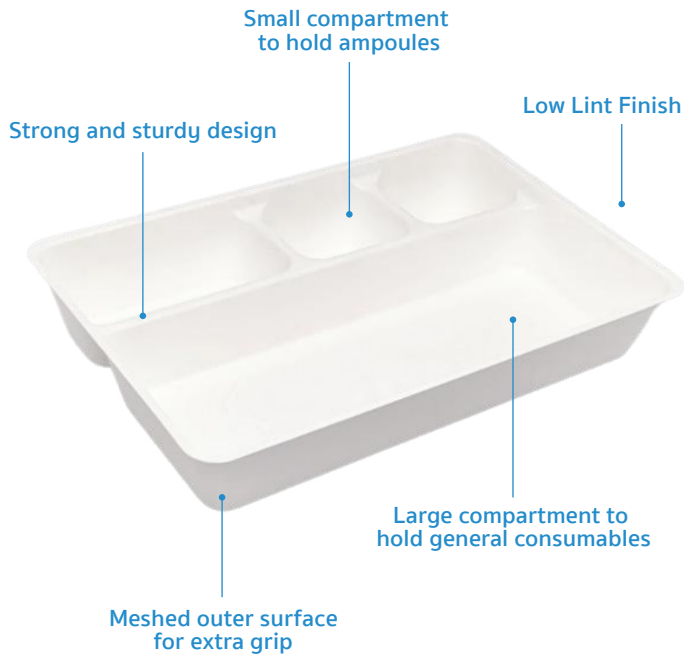
Manufacturer of Moulded Pulps

# ANAESTHETIC TRAY 4-COMPARTMENT Eco-Friendly Medical Pulp



Made from  
**BIODEGRADABLE**  
Sugarcane Bagasse

Designed for Single Use to  
Reduce Risk of Infection



The Food Grade Anaesthetic Tray with 4-Compartment is made from eco-friendly biodegradable sugarcane bagasse, intended for use as multi-purpose tray to organise surgical instruments, ampoules, dressings, wipes, creams and other medical items with two small, one medium and one large compartments. It is designed with smooth inner finishing and meshed outer surface for extra grip.

Manufactured as single-use disposable medical pulp to meet the requirement to hold water and/or human waste for a minimum period of four hours at an initial temperature of 35°C. Suitable for disposal into macerator which complies with PAS29:1999 "Disposable Pulp For Use in Healthcare".

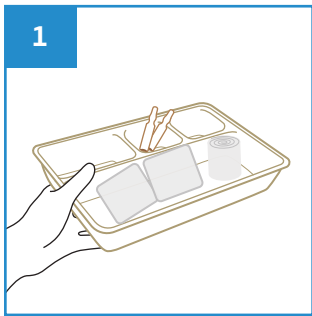
## Features

- Consist of four deep compartments, ideal for surgical procedures
- Able to retain water for at least 4 hours
- Non-sterile, single use tray
- Meshed outer surface for better grip
- Made from sugarcane bagasse
- Biodegradable and compostable
- Can be disposed into macerator
- Manufactured in accordance with:
  - EU Regulation No. 1935/2004  
Materials intended to come into contact with food
  - US FDA 21 CFR 176.170  
Components of paper and paperboard in contact with aqueous and fatty foods.

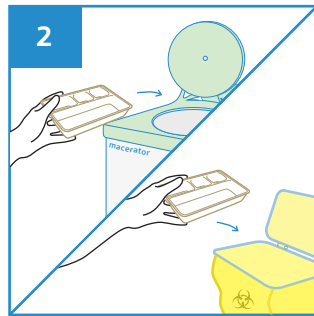
## Caution

- Do not pour alcohol based solutions into the compartment tray.

## User Guide



1 Place surgical items on the Anaesthetic Tray.



2 After use, dispose the Anaesthetic Tray into macerator or appropriate waste bins.



PRODUCT DESCRIPTION	PRODUCT SIZE	PACKAGING	CARTON DIMENSION	PRODUCT CODE
Anaesthetic Tray 4-Compartment (Food Grade)	270 x 180 x 45 mm	100 pcs per carton	370 x 285 x 185 mm	101APPT4C2000



Manufactured in accordance with PAS29:1999  
Disposable Pulp Products For Use in Healthcare

Rev0(0722)EN

