



APEX PULP

Manufacturer of Moulded Pulps

MAXI SLIPPER PAN LINER 2000ML Eco-Friendly Medical Pulp



Made from
BIODEGRADABLE
Double Lined Kraft

Designed for Single Use to
Reduce Risk of Infection



The Maxi Slipper Pan Liner with 2L rated capacity is made from eco-friendly biodegradable kraft material, intended for use as fracture receptacle for urine and/or faeces. To use the maxi slipper pan liner on the bed, place it over a plastic support.

Manufactured as single-use disposable medical pulp to meet the requirement to hold water and/or human waste for a minimum period of four hours at an initial temperature of 35°C. Suitable for disposal via macerator which complies with PAS29:1999 "Disposable Pulp For Use in Healthcare".

Suitable for



Hospitals



Nursing Homes



Personal Use

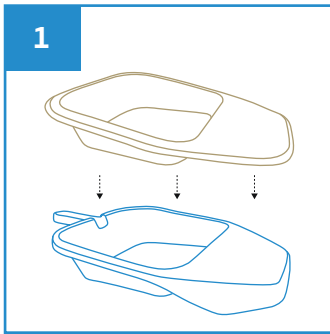


Medical Clinics

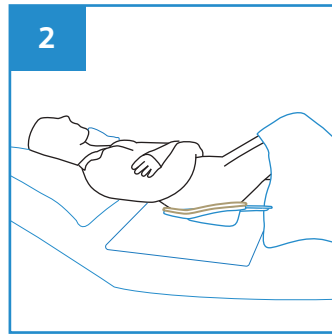


Disability Homes

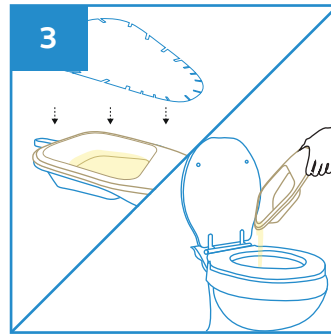
User Guide



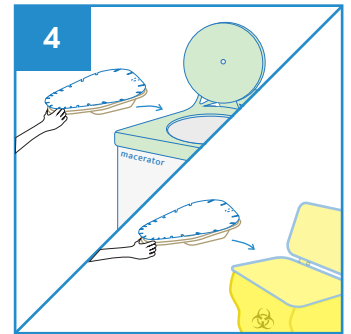
Place the Maxi Slipper Pan Liner over the plastic maxi slipper pan support.



Slide the Maxi Slipper Pan Liner with support under the buttock. To prevent spills, place a sheet of incontinence pad under the Maxi Slipper Pan.



After use, remove the Maxi Slipper Pan Liner with support, place a lid cover over it to contain the odour and sight.



Dispose the Maxi Slipper Pan Liner directly into macerator or empty the content from the maxi slipper pan liner before disposing into appropriate waste bins.

Note: DO NOT dispose the plastic support into macerator.



Stackable



Water Retention



Macerator Friendly



Eco-Friendly



Recyclable

PRODUCT DESCRIPTION

Maxi Slipper Pan Liner Graduated 2000ml

PRODUCT SIZE

360 x 270 x 87 mm

PACKAGING

100 pcs per carton

CARTON DIMENSION

580 x 360 x 420 mm

ORDER CODE

100APPMSP2000



Manufactured in accordance with PAS29:1999
Disposable Pulp Products For Use in Healthcare

Rev1(1123)EN



APEX PULP PTE LTD

www.apexpulp.com

sales@apexpulp.com

© 2023 APEX PULP PTE LTD. All rights reserved.

APEX PULP
Manufacturer of Moulded Pulps

Ref: APEX-PIB-MSP2000