

KIDNEY DISH 950ML

Eco-Friendly Medical Pulp



Made from
BIODEGRADABLE
Sugarcane Bagasse

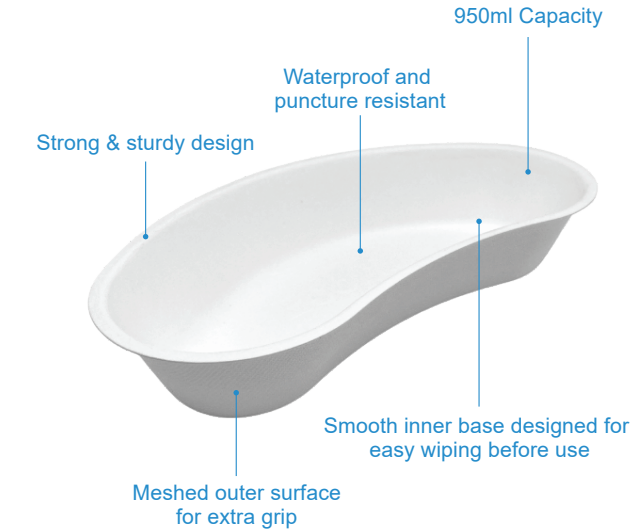
Designed for Single Use to
Reduce Risk of Infection

Kidney Dish 950ml

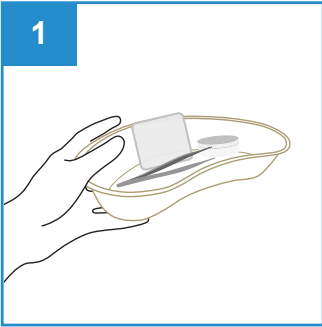
Eco-Friendly Medical Pulp

The Food Grade Kidney Dish with 950ml rated capacity is made from eco-friendly biodegradable sugarcane bagasse, intended for use as multi-purpose dish to carry surgical instruments, dressings, wipes, creams and other medical items. It is designed with smooth inner finishing and meshed outer surface for extra grip.

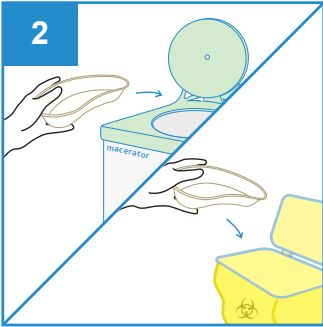
Manufactured as single-use disposable medical pulp to meet the requirement to hold water and/or human waste for a minimum period of four hours at an initial temperature of 35°C. Suitable for disposal into macerator which complies with PAS29:1999 “Disposable Pulp For Use in Healthcare”.



User Guide



Place surgical items on the Kidney Dish.



After use, dispose the Kidney Dish into macerator or appropriate waste bins.

Features

- Kidney shaped tray, ideal for surgical procedures
- Able to retain water for at least 4 hours
- Non-sterile, single use kidney dish
- Meshed outer surface for better grip
- Made from sugarcane bagasse
- Biodegradable and compostable
- Can be disposed into macerator
- Manufactured in accordance with:
 - EU Regulation No. 1935/2004
Materials intended to come into contact with food
 - US FDA 21 CFR 176.170
Components of paper and paperboard in contact with aqueous and fatty foods.

Caution

- Do not pour alcohol based solutions into the kidney dish.



Single-Use



Macerator
Friendly



Eco-Friendly



Water
Retention



Stackable



Recycled



No Direct
Sunlight



Keep Dry

PRODUCT DESCRIPTION	PRODUCT SIZE	PACKAGING	CARTON DIMENSION
Kidney Dish Food Grade 950ml	245 x 120 x 45mm	300 pcs per carton	470 x 275 x 430mm

UDI-DI: 95510204301516

ORDER CODE: 101xxxKNS0950 (xxx to be assigned upon ordering)

