



APEX PULP

Manufacturer of Moulded Pulps

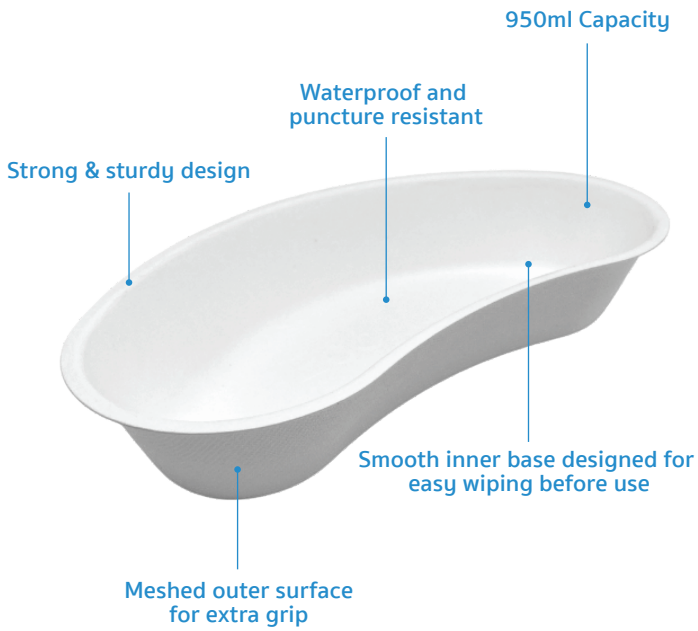
KIDNEY DISH 950ML

Eco-Friendly Medical Pulp



Made from
BIODEGRADABLE
Sugarcane Bagasse

Designed for Single Use to
Reduce Risk of Infection



The Food Grade Kidney Dish with 950ml rated capacity is made from eco-friendly biodegradable sugarcane bagasse, intended for use as multi-purpose dish to carry surgical instruments, dressings, wipes, creams and other medical items. It is designed with smooth inner finishing and meshed outer surface for extra grip.

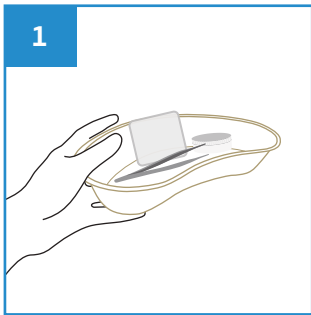
Manufactured as single-use disposable medical pulp to meet the requirement to hold water and/or human waste for a minimum period of four hours at an initial temperature of 35°C. Suitable for disposal into macerator which complies with PAS29:1999 “Disposable Pulp For Use in Healthcare”.

Features

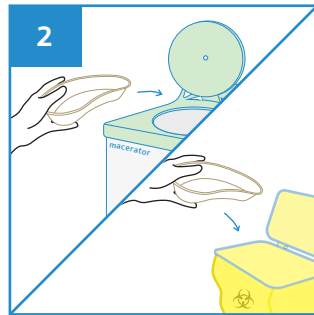
- Kidney shaped tray, ideal for surgical procedures
- Able to retain water for at least 4 hours
- Non-sterile, single use kidney dish
- Meshed outer surface for better grip
- Made from sugarcane bagasse
- Biodegradable and compostable
- Can be disposed into macerator
- Manufactured in accordance with:

- EU Regulation No. 1935/2004
Materials intended to come into contact with food
- US FDA 21 CFR 176.170
Components of paper and paperboard in contact with aqueous and fatty foods.

User Guide



1 Place surgical items on the Kidney Dish.



2 After use, dispose the Kidney Dish into macerator or appropriate waste bins.

Caution

- Do not pour alcohol based solutions into the Kidney Dish.



Stackable



Water Retention



Macerator Friendly



Eco-Friendly



Recyclable

PRODUCT DESCRIPTION	PRODUCT SIZE	PACKAGING	CARTON DIMENSION	PRODUCT CODE
Kidney Dish 950ml (Food Grade)	245 x 120 x 45 mm	300 pcs per carton	470 x 275 x 430 mm	101APPKNS0950



Manufactured in accordance with PAS29:1999
Disposable Pulp Products For Use in Healthcare

Rev0(0722)EN

