

# KIDNEY DISH 950ML

## Eco-Friendly Medical Pulp



Made from  
**BIODEGRADABLE**  
Double Lined Kraft

Designed for Single Use to  
Reduce Risk of Infection

## Kidney Dish 950ml Biodegradable Medical Pulp

The Kidney Dish is made from eco-friendly biodegradable kraft material, intended for use as multi-purpose dish to carry surgical instrument, dressings, wipes, creams and other medical items.

Manufactured in accordance with PAS29:1999 Disposable Pulp Products For Use in Healthcare.

### Suitable for



Hospitals



Nursing Homes



Personal Use

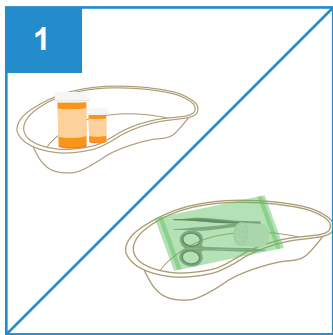


Medical Clinics

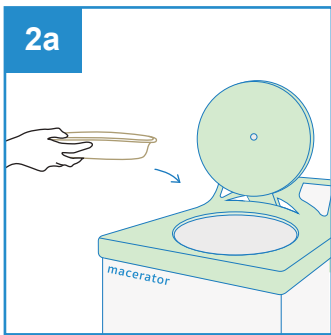


Disability Homes

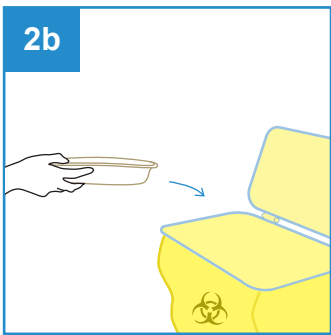
### User Guide



Place medical items on Kidney Dish.



After use, dispose the empty Kidney Dish into macerator or into appropriate waste bins.



Note: DO NOT dispose medical items into macerator.



Single-Use



Macerator Friendly



Eco-Friendly



Water Retention



Stackable



Recycled



No Direct Sunlight



Keep Dry

PRODUCT DESCRIPTION	PRODUCT SIZE	PACKAGING	CARTON DIMENSION
Kidney Dish 950ml	270 x 140 x 55mm	300 pcs per carton	580 x 360 x 420mm

UDI-DI: 95510204301448

ORDER CODE: 100xxxKND0950 (xxx to be assigned upon ordering)

