



# APEX PULP

Manufacturer of Moulded Pulps

## KIDNEY DISH 950ML Eco-Friendly Medical Pulp



Made from  
BIODEGRADABLE  
Double Lined Kraft

Designed for Single Use to  
Reduce Risk of Infection



The Kidney Dish is made from eco-friendly biodegradable kraft material, intended for use as multi-purpose dish to carry surgical instrument, dressings, wipes, creams and other medical items.

Manufactured as single-use disposable medical pulp to meet the requirement to hold water and/or human waste for a minimum period of four hours at an initial temperature of 35°C. Suitable for disposal into macerator which complies with PAS29:1999 “Disposable Pulp For Use in Healthcare”.

**Suitable for**



Hospitals



Nursing Homes



Personal Use

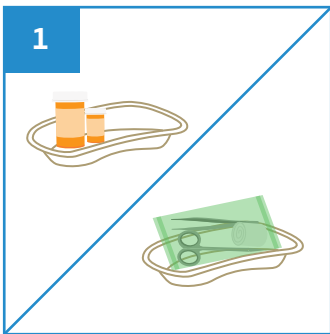


Medical Clinics

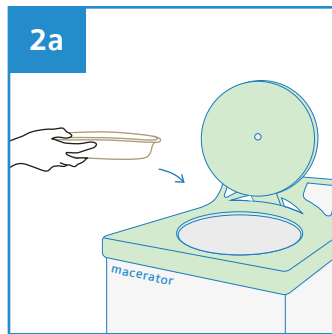


Disability Homes

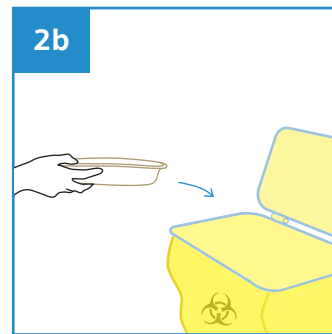
**User Guide**



1 Place medical items on Kidney Dish.



2a After use, dispose the empty Kidney Dish into macerator or into appropriate waste bins.



Note: DO NOT dispose medical items into macerator.



Stackable



Water Retention



Macerator Friendly



Eco-Friendly



Recyclable

| PRODUCT DESCRIPTION | PRODUCT SIZE      | PACKAGING          | CARTON DIMENSION   | ORDER CODE    |
|---------------------|-------------------|--------------------|--------------------|---------------|
| Kidney Dish 950ml   | 270 x 130 x 60 mm | 300 pcs per carton | 580 x 360 x 420 mm | 100APPKND0950 |



Manufactured in accordance with PAS29:1999  
Disposable Pulp Products For Use in Healthcare

