

KIDNEY DISH 700ML

Eco-Friendly Medical Pulp



Made from
BIODEGRADABLE
Double Lined Kraft

Designed for Single Use to
Reduce Risk of Infection

Kidney Dish 700ml Biodegradable Medical Pulp

The Kidney Dish is made from eco-friendly biodegradable kraft material, intended for use as multi-purpose dish to carry surgical instrument, dressings, wipes, creams and other medical items.

Manufactured in accordance with PAS29:1999 Disposable Pulp Products For Use in Healthcare.



Suitable for



Hospitals



Nursing Homes



Personal Use

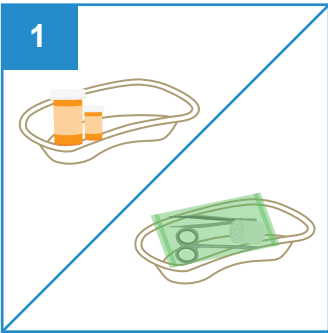


Medical Clinics

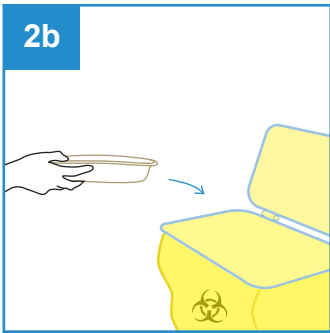
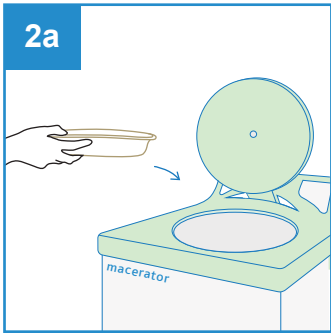


Disability Homes

User Guide



Place medical items on Kidney Dish.



After use, dispose the empty Kidney Dish into macerator or into appropriate waste bins.

Note: DO NOT dispose medical items into macerator.



Single-Use



Macerator Friendly



Eco-Friendly



Water Retention



Stackable



Recycled



No Direct Sunlight



Keep Dry

PRODUCT DESCRIPTION	PRODUCT SIZE	PACKAGING	CARTON DIMENSION
Kidney Dish 700ml	270 x 140 x 50mm	300 pcs per carton	465 x 275 x 320mm

UDI-DI: 95510204301370
ORDER CODE: 100xxxKND0700 (xxx to be assigned upon ordering)

