



APEX PULP

Manufacturer of Moulded Pulps

KIDNEY DISH 700ML

Eco-Friendly Medical Pulp



Made from
BIODEGRADABLE
Double Lined Kraft

Designed for Single Use to
Reduce Risk of Infection



The Kidney Dish is made from eco-friendly biodegradable kraft material, intended for use as multi-purpose dish to carry surgical instrument, dressings, wipes, creams and other medical items.

Manufactured as single-use disposable medical pulp to meet the requirement to hold water and/or human waste for a minimum period of four hours at an initial temperature of 35°C. Suitable for disposal into macerator which complies with PAS29:1999 "Disposable Pulp For Use in Healthcare".

Suitable for



Hospitals



Nursing Homes



Personal Use

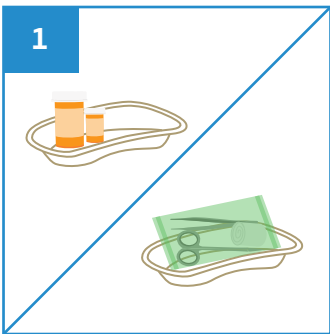


Medical Clinics

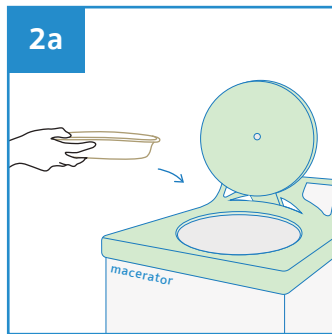


Disability Homes

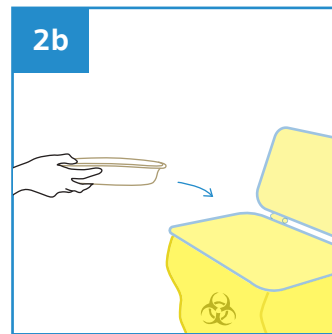
User Guide



Place medical items on Kidney Dish.



After use, dispose the empty Kidney Dish into macerator or into appropriate waste bins.



Note: DO NOT dispose medical items into macerator.



Stackable



Water Retention



Macerator Friendly



Eco-Friendly



Recyclable

PRODUCT DESCRIPTION	PRODUCT SIZE	PACKAGING	CARTON DIMENSION	ORDER CODE
Kidney Dish 700ml	260 x 140 x 50 mm	300 pcs per carton	580 x 360 x 420 mm	100APPKND0700



Manufactured in accordance with PAS29:1999
Disposable Pulp Products For Use in Healthcare

