

# GENERAL WASH BOWL 4000ML

Eco-Friendly Medical Pulp



Made from  
**BIODEGRADABLE**  
Double Lined Kraft

Designed for Single Use to  
Reduce Risk of Infection

## General Wash Bowl 4000ml Biodegradable Medical Pulp



Our General Wash Bowl 4L, crafted from recycled Kraft Paper, is a sustainable single-use solution. With a capacity of 4 liters, it reduces the risk of cross-contamination while retaining soapy water at 45°C for up to 2 hours. Perfect for rinsing and washing towels in healthcare settings.

Manufactured in accordance with PAS29:1999 Disposable Pulp Products For Use in Healthcare.

### Suitable for



Hospitals



Nursing Homes



Personal Use



Medical Clinics

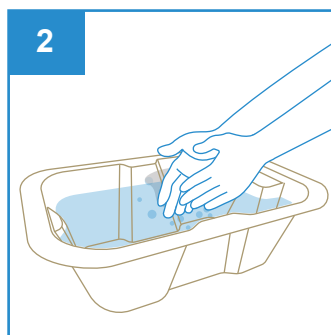


Disability Homes

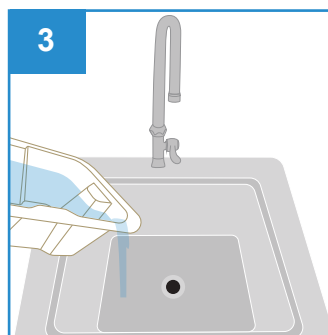
### User Guide



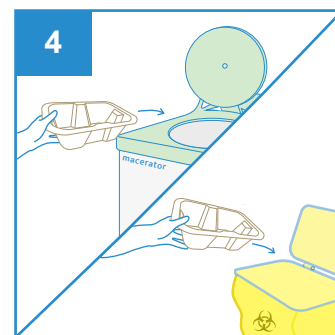
Dispense and apply soap directly on the patient's body or on a towel.



Rinse the towel in the General Wash Bowl, and wipe the patient body clean.



After use, empty the contents into the sink.



Dispose the General Wash Bowl directly into macerator or into appropriate waste bins.

**Caution**  
Do not dispense soap directly

Note: DO NOT dispose the towel into macerator.



Single-Use



Macerator  
Friendly



Eco-Friendly



Water  
Retention



Stackable



Recycled



No Direct  
Sunlight



Keep Dry

### PRODUCT DESCRIPTION

General Wash Bowl 4000ml

### PRODUCT SIZE

350 x 255 x 120mm

### PACKAGING

100 pcs per carton

### CARTON DIMENSION

520 x 360 x 500mm

UDI-DI: 95510204300908

ORDER CODE: 100xxxGWB4000 (xxx to be assigned upon ordering)



**APEX PULP PTE LTD**

Company Registration No.: 200715327H  
132 Joo Seng Road #04-01, Singapore 368358  
Tel: +65 6817 8969 | Fax: +65 6636 9813  
www.apexpulp.com | sales@apexpulp.com

DOC. REF: APEX-PIB-GWB4000

Date of Revision: 09/01/2026

Revision: 6

© 2026 APEX PULP PTE LTD. All rights reserved.