



APEX PULP

Manufacturer of Moulded Pulps

GENERAL WASH BOWL 4000ML Eco-Friendly Medical Pulp



Made from
BIODEGRADABLE
Double Lined Kraft

Designed for Single Use to
Reduce Risk of Infection



Our disposable General Wash Bowl 4L is ideal for rinsing of towels and as container for large volume of liquid. It is easy to use and environmentally friendly. Designed for single use so as to reduce the risk of infection.

Suitable for



Hospitals



Nursing Homes



Personal Use



Medical Clinics



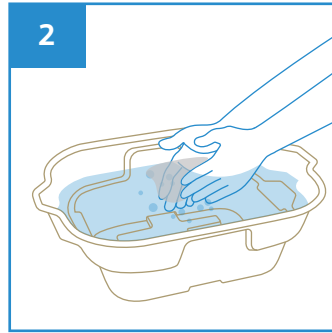
Disability Homes

User Guide

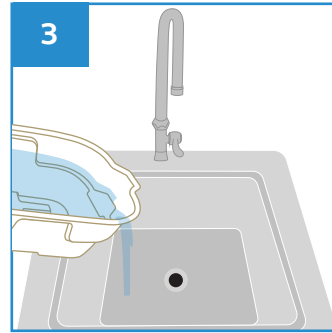


Dispense and apply soap directly on the patient's body or on a towel

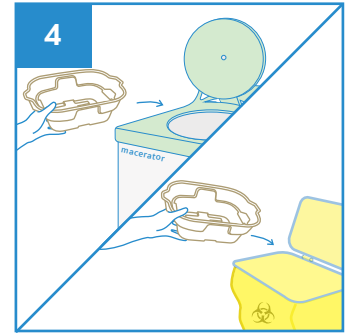
Caution
Do not dispense soap directly into the wash bowl



Rinse the towel in the General Wash Bowl, and wipe the patient body clean



After use, empty the contents into the sink



Dispose the General Wash Bowl directly into macerator or into appropriate waste bins.

Note: DO NOT dispose the towel into macerator.



Stackable



Water Retention



Macerator Friendly



Eco-Friendly



Recyclable

PRODUCT DESCRIPTION

General Wash Bowl 4000ml

PRODUCT SIZE

330 x 245 x 105 mm

PACKAGING

100 pcs per carton

CARTON DIMENSION

720 x 370 x 310 mm

ORDER CODE

100APPGWB4000



Manufactured in accordance with PAS29:1999
Disposable Pulp Products For Use in Healthcare

Rev3(1129)EN



APEX PULP PTE LTD

www.apexpulp.com

sales@apexpulp.com

© 2023 APEX PULP PTE LTD. All rights reserved.

APEX PULP
Manufacturer of Moulded Pulps

Ref: APEX-PIB-GPB1000