

# GENERAL SEMI BOWL 1500 ML Eco-Friendly Medical Pulp



Made from  
**BIODEGRADABLE**  
Double Lined Kraft

Designed for Single Use to  
Reduce Risk of Infection

## General Semi Bowl 1500ml Biodegradable Medical Pulp

The General Semi Bowl with 1.5L rated capacity is made from eco-friendly biodegradable kraft material, intended for use as vomit bowl or sampling of urine and/or faeces by placing it over toilet bowl.

Manufactured in accordance with PAS29:1999 Disposable Pulp Products For Use in Healthcare.

### Suitable for



Hospitals



Nursing Homes



Personal Use

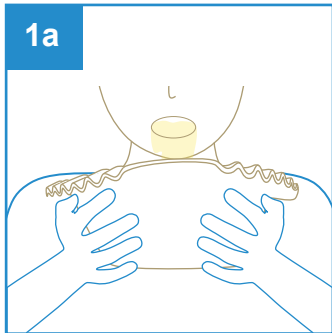


Medical Clinics

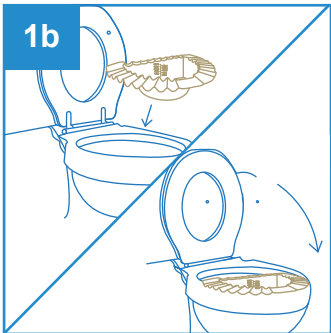


Disability Homes

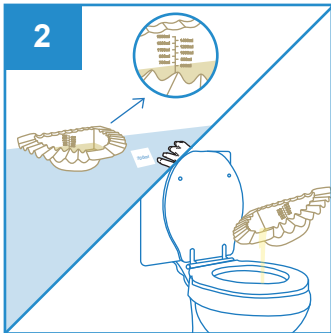
### User Guide



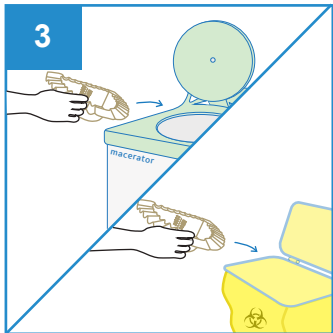
For vomiting, hold the General Semi Bowl with both hands below the chin and vomit into it.



For sampling, raise the toilet seat lid, place the General Semi Bowl over the toilet bowl (place front for urine or rear for faeces) and lower the lid.



Read and record volume of the liquid from the level markings.



Dispose the General Semi Bowl directly into macerator or empty liquid from the bowl before disposing into appropriate waste bins.



Single-Use



Macerator  
Friendly



Eco-Friendly



Water  
Retention



Stackable



Recycled



No Direct  
Sunlight



Keep Dry

PRODUCT DESCRIPTION	PRODUCT SIZE	PACKAGING	CARTON DIMENSION
General Semi Bowl 1500ml	330 x 220 x 110mm	100 pcs per carton	450 x 340 x 450mm

UDI-DI: 95510204300762

ORDER CODE: 100xxxGSB1500 (xxx to be assigned upon ordering)

