

GENERAL PURPOSE POT 2000ML

Eco-Friendly Medical Pulp



Made from
BIODEGRADABLE
Double Lined Kraft

Designed for Single Use to
Reduce Risk of Infection

General Purpose Pot 2000ml
Biodegradable Medical Pulp

The General Purpose Pot with 2L rated capacity is made from eco-friendly biodegradable kraft material, intended for use as container to drain urine and/or to determine the amount of urine or fluid as it is marked with graduation levels ranging from 50ml to 2000ml.

Manufactured in accordance with PAS29:1999 Disposable Pulp Products For Use in Healthcare.

Suitable for



Hospitals



Nursing Homes



Personal Use

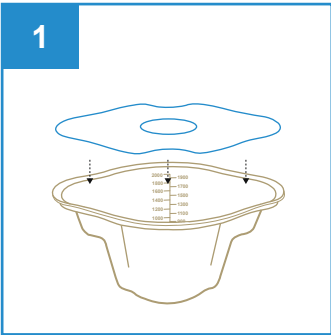


Medical Clinics

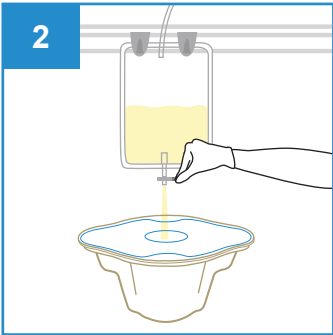


Disability Homes

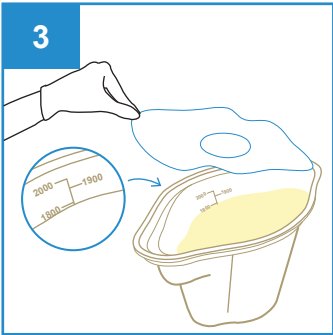
User Guide



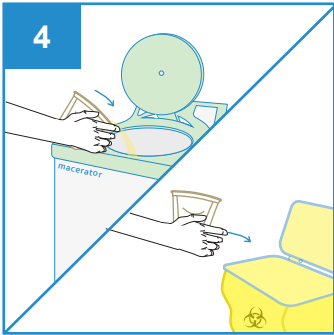
Place lid over General Purpose Pot.



Place General Purpose Pot under urinal bag. Drain urine through the lid hole to prevent splashes.



To measure contents, remove the lid and read the volume from graduated markings.



Dispose the General Purpose Pot with lid directly into macerator or into appropriate waste bins.



Single-Use



Macerator
Friendly



Eco-Friendly



Water
Retention



Stackable



Recycled



No Direct
Sunlight



Keep Dry

PRODUCT DESCRIPTION	PRODUCT SIZE	PACKAGING	CARTON DIMENSION
General Purpose Pot 2000ml	260 x 180 x 105mm	100 pcs per carton	755 x 370 x 310mm

UDI-DI: 95510204301134
ORDER CODE: 100xxxGPP2000 (xxx to be assigned upon ordering)

