

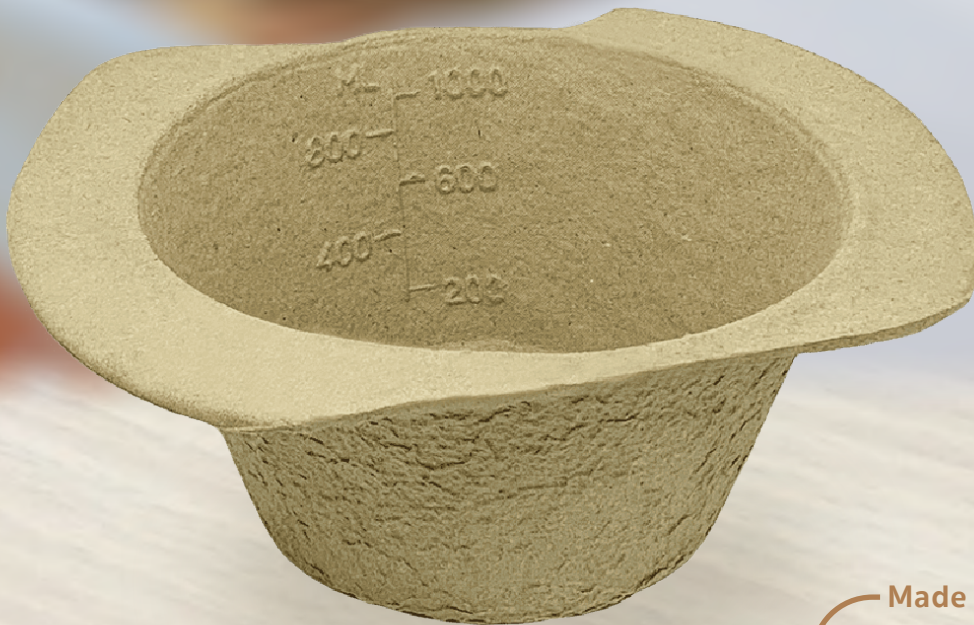


# APEX PULP

Manufacturer of Moulded Pulps

# GENERAL PURPOSE BOWL 1000ML

## Eco-Friendly Medical Pulp



Made from  
**BIODEGRADABLE**  
Double Lined Kraft

Designed for Single Use to  
Reduce Risk of Infection



Our disposable General Purpose Bowl with 1L capacity, comes with graduation markings is ideal for washing or vomiting. This is designed for single use so as to reduce the risk of infection.

**Suitable for**



Hospitals



Nursing Homes



Personal Use

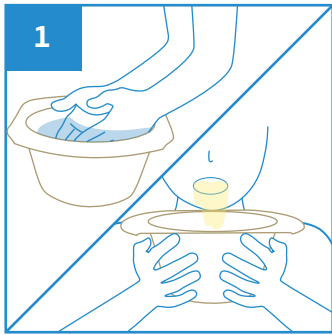


Medical Clinics

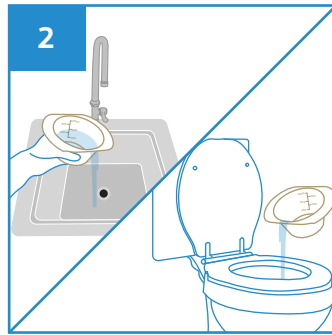


Disability Homes

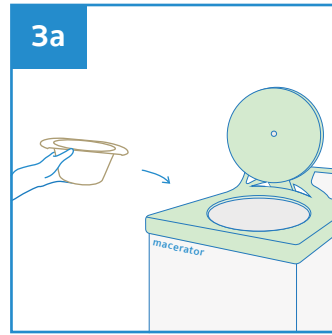
**User Guide**



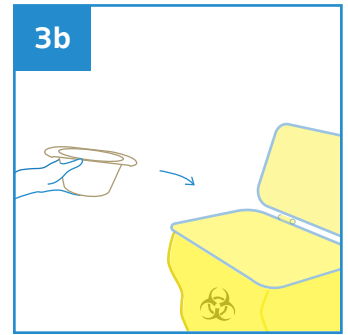
1 Use General Purpose Bowl for washing or vomiting



2 After use, empty the contents into sink or toilet bowl



3a Dispose the General Purpose Bowl directly into macerator



3b Dispose the General Purpose Bowl directly into appropriate waste bins



Stackable



Water Retention



Macerator Friendly



Eco-Friendly



Recyclable

PRODUCT DESCRIPTION	PRODUCT SIZE	PACKAGING	CARTON DIMENSION	ORDER CODE
General Purpose Bowl 1000ml	220x 170 x 85 mm	100 pcs per carton	510 x 260 x 360 mm	GPB1000



Manufactured in accordance with PAS29:1999  
Disposable Pulp Products For Use in Healthcare

Rev3(1123)EN

