



APEX PULP

Manufacturer of Moulded Pulps

BEDPAN SUPPORT <100KG Eco-Friendly Medical Pulp



Made from
BIODEGRADABLE
Double Lined Kraft

Designed for Single Use to
Reduce Risk of Infection



The sturdy Bedpan Support that supports up to 100 kg evenly distributed weight, is made from eco-friendly biodegradable kraft material, intended for use as support with bedpan liner place over it. Due to the innovative mould pulp design structure, it can withstand patient weighing up to 100 kg when placed under the buttock.

Manufactured as single-use disposable medical pulp to meet the requirement to hold water and/or human waste for a minimum period of four hours at an initial temperature of 35°C. Suitable for disposal via macerator which complies with PAS29:1999 "Disposable Pulp For Use in Healthcare".

Suitable for



Hospitals



Nursing Homes



Personal Use

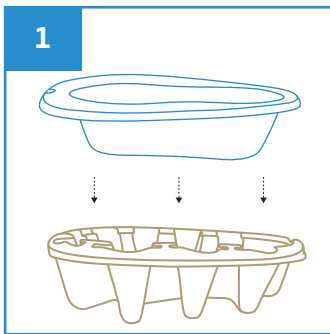


Medical Clinics

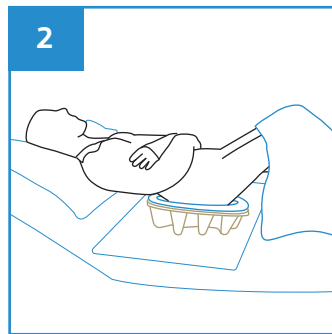


Disability Homes

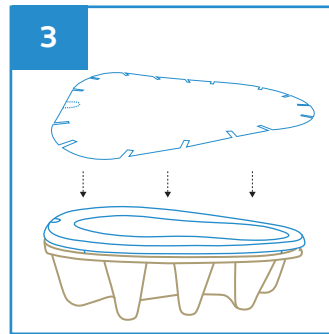
User Guide



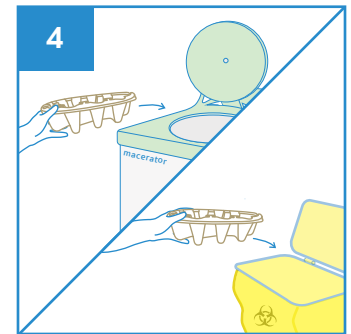
Place bedpan liner over the disposable moulded pulp bedpan support.



Slide the bedpan liner with support under the buttock. To prevent spills, place a sheet of incontinence pad under the bedpan.



After use, remove the bedpan liner with support, place a lid cover over it to contain the odour and sight.



Dispose the Bedpan Liner with disposable support directly into macerator or empty the content from bedpan liner before disposing into appropriate waste bins.



Stackable



Water Retention



Macerator Friendly



Eco-Friendly



Recyclable

PRODUCT DESCRIPTION

Bedpan Support 100kg

PRODUCT SIZE

365 x 295 x 90 mm

PACKAGING

40 pcs per carton

CARTON DIMENSION

755 x 370 x 310 mm

ORDER CODE

100APBPS2000



Manufactured in accordance with PAS29:1999
Disposable Pulp Products For Use in Healthcare

Rev3(1129)EN



APEX PULP PTE LTD

www.apexpulp.com

sales@apexpulp.com

© 2023 APEX PULP PTE LTD. All rights reserved.

APEX PULP
Manufacturer of Moulded Pulps

Ref: APEX-PIB-GPB1000