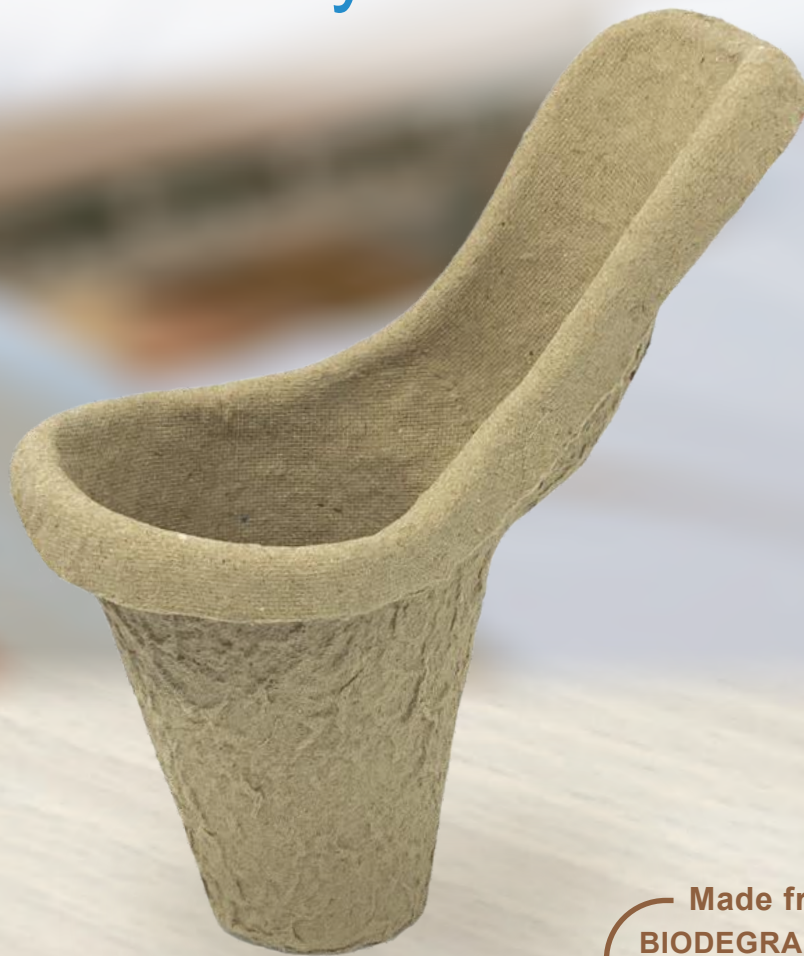


ADAPTOR FOR URINAL BULBOUS

Eco-Friendly Medical Pulp



Made from
BIODEGRADABLE
Double Lined Kraft

Designed for Single Use to
Reduce Risk of Infection

Adaptor For Urinal Bulbous Biodegradable Medical Pulp



The Adaptor for Urinal Bulbous is made from eco-friendly biodegradable kraft material, intended for use as an adaptor for converting male urinal bulbous to female urinal bulbous. The contoured opening is designed to fit comfortably when placed between the legs of female patients in either sitting for laying positions.

Manufactured in accordance with PAS29:1999 Disposable Pulp Products For Use in Healthcare.

Suitable for



Hospitals



Nursing Homes



Personal Use

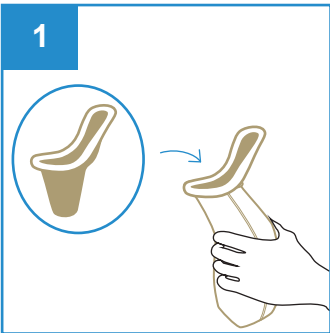


Medical Clinics

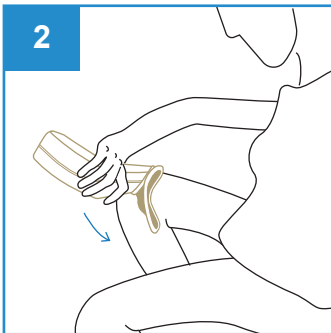


Disability Homes

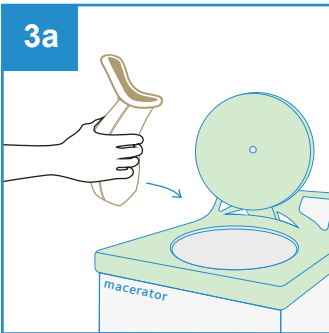
User Guide



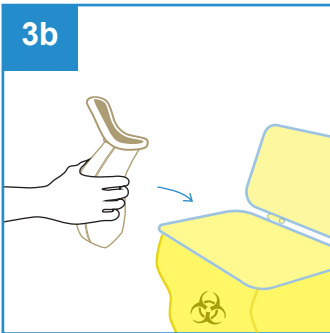
Insert Adaptor into Male Urinal Bulbous converting it as Female Urinal Bulbous.



Place the Female Urinal Bulbous between the legs and cover completely for urination.



Dispose the Female Urinal Bulbous directly into macerator or empty the content from the Female Urinal Bulbous before disposing into appropriate waste bins.



Single-Use



Macerator
Friendly



Eco-Friendly



Water
Retention



Stackable



Recycled



No Direct
Sunlight



Keep Dry

PRODUCT DESCRIPTION	PRODUCT SIZE	PACKAGING	CARTON DIMENSION
Adaptor for Urinal Bulbous	145 x 115 x 65mm	200 pcs per carton	510 x 260 x 250mm

UDI-DI: 95510204301752
ORDER CODE: 100xxxAUB1000 (xxx to be assigned upon ordering)

