

GRADUATED MEASURING JUG 1000ML

Eco-Friendly Medical Pulp



Made from
BIODEGRADABLE
Double Lined Kraft

Designed for Single Use to
Reduce Risk of Infection



The Graduated Measuring Jug with 1L rated capacity is made from eco-friendly biodegradable kraft material, intended for use as measuring jug to determine the amount of urine or fluid as it is marked with graduation levels ranging from 50ml to 1000ml.

Manufactured as single-use disposable medical pulp to meet the requirement to hold water and/or human waste for a minimum period of four hours at an initial temperature of 35°C. Suitable for disposal into macerator which complies with PAS29:1999 "Disposable Pulp For Use in Healthcare".

Suitable for



Hospitals



Nursing Homes



Personal Use

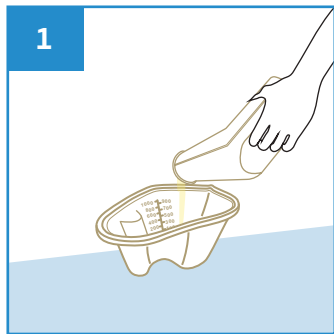


Medical Clinics

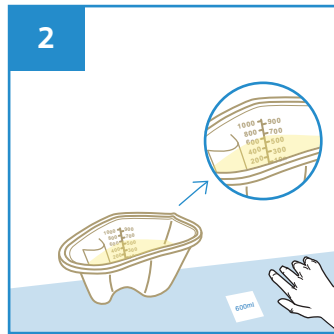


Disability Homes

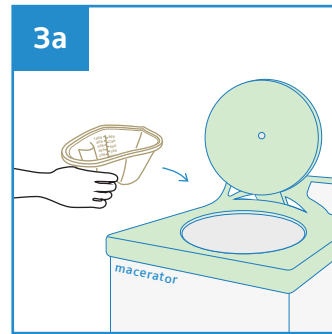
User Guide



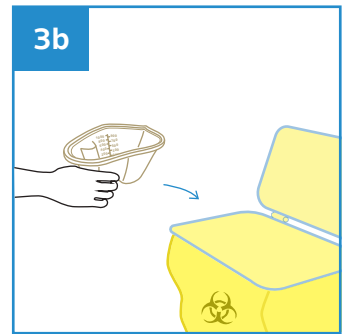
Place the Graduated Measuring Jug on a flat surface, pour liquid into it slowly to prevent splashes.



Read and record volume of the liquid from the level markings.



Dispose the Graduated Measuring Jug directly into macerator or empty liquid from the jug before disposing into appropriate waste bins.



Stackable



Water Retention



Macerator Friendly



Eco-Friendly



Recycled

PRODUCT DESCRIPTION	PRODUCT SIZE	PACKAGING	CARTON DIMENSION	ORDER CODE
Graduated Measuring Jug 1000ml	260 x 180 x 115 mm	100 pcs per carton	510 x 260 x 360 mm	100APPGMJ1000



Manufactured in accordance with PAS29:1999
Disposable Pulp Products For Use in Healthcare

Rev1(0225)EN



APEX PULP PTE LTD

www.apexpulp.com

sales@apexpulp.com

© 2025 APEX PULP PTE LTD. All rights reserved.



APEX PULP
Manufacturer of Moulded Pulps

Ref: APEX-PIB-GMJ1000