

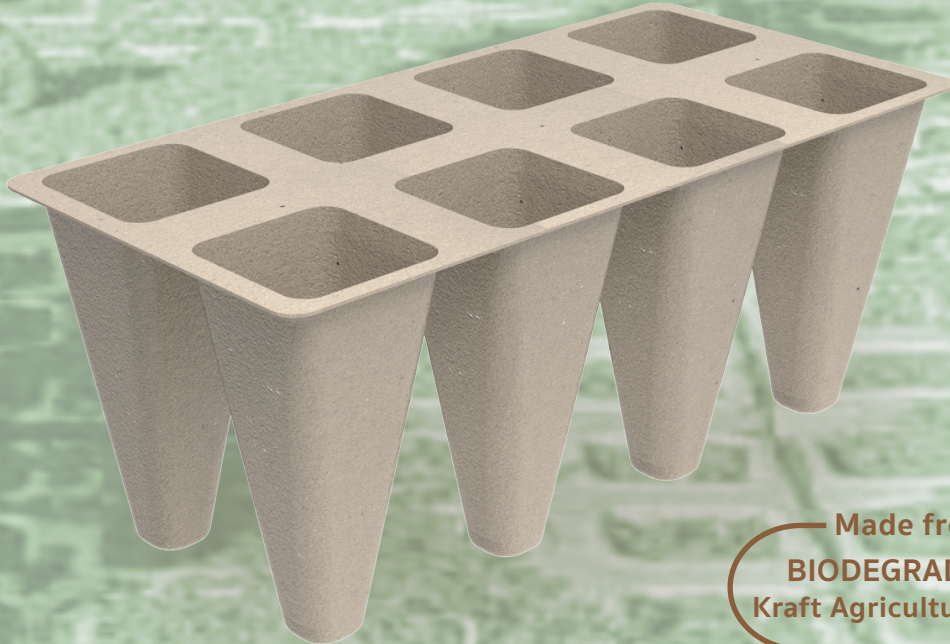


APEX PULP

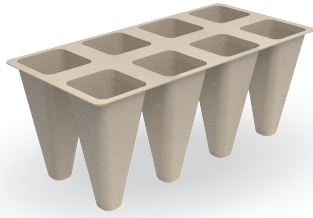
Manufacturer of Moulded Pulps

SEEDLING TRAY 8-CAVITY

Eco-Friendly Pulp



Made from
BIODEGRADABLE
Kraft Agricultural Pulps



The Seedling Tray with 8 Cavities is made from eco-friendly biodegradable kraft material, intended for use as tray for germinating seeds up to vegetative stage. It is designed to help young roots absorb nutrients from the soil until the roots are strong enough to penetrate through the moulded pulps.

To transfer young and growing seedlings to larger pot, simply cut out each individual tray and transfer it to larger pot, resulting in almost 100% transfer yield.

Suitable for

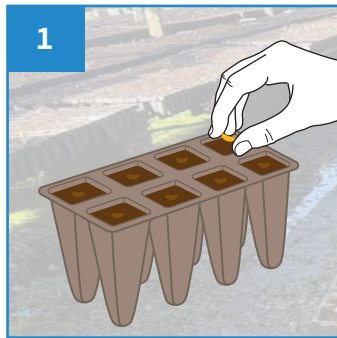


Farmer / Gardener

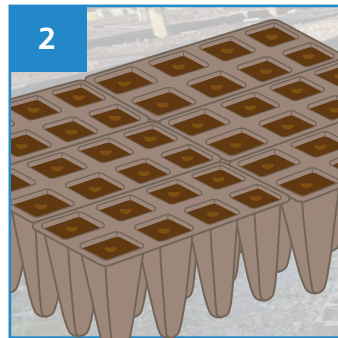


GreenHouse Nursery

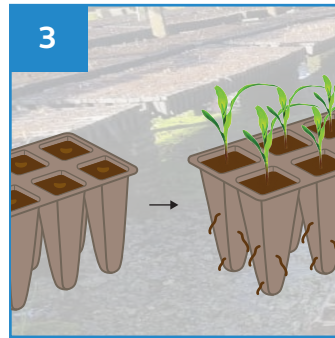
User Guide



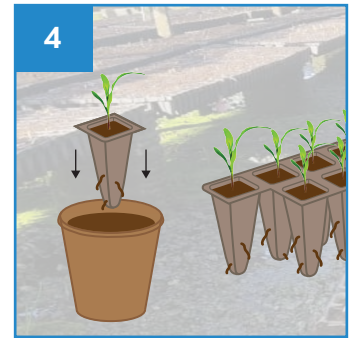
1 Fill each cavity with your mix of soil. Plant a seed into the soil for each cavity.



2 Arrange the filled trays at nursery with optimum condition for germinating.



3 Once the roots start to penetrate through the pulp, consider transferring the young seedlings to pots.



4 Separating each cavity by cutting the pulp. Transfer to larger pot directly with the pulp.



Stackable



Water Retention



Macerator Friendly



Eco-Friendly



Recyclable

PRODUCT DESCRIPTION

Seedling Tray 8-Cavity

PRODUCT SIZE

Ø2.9 x 1 mm

PACKAGING

100 pcs per carton

CARTON DIMENSION

L62 x W31 xH31 mm

ORDER CODE

110APPSDT0008



Manufactured in accordance with PAS29:1999
Disposable Pulp Products For Use in Healthcare

Rev0(0822)EN



APEX PULP PTE LTD

www.apexpulp.com

sales@apexpulp.com

© 2022 APEX PULP PTE LTD. All rights reserved.