

## INSTRUCTIONS FOR USE

Ref: APEX-IFU-T4C2000

Description	Procedure Tray Tray 4-Compartment 2000ml Disposable Medical Pulp
Product Part Number	T4C2000
Ordering Item Code	101xxxT4C2000 (xxx – To be assigned upon order)
UDI-DI	95510204301998

### Product Image



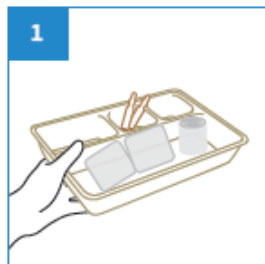
### Intended Use

The Food Grade Procedure Tray with 4 compartments is made from biodegradable sugarcane bagasse for patient care and monitoring. It organises instruments, ampoules, dressings, wipes, creams, and other items—two small, one medium, one large compartment. Smooth inner finish and meshed outer surface provide grip. Do **NOT** pour alcohol-based solutions into the tray.

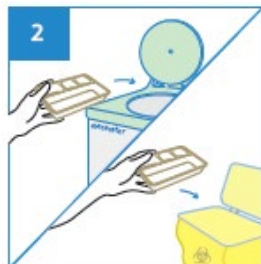
### Storage

Keep in a cool, dry place, away from heat, flames, and sunlight.

### User Guide



Place surgical items on the Procedure Tray.



After use, dispose the Procedure Tray into macerator or appropriate waste bins.



### WARNING

Any serious incident related to the device must be reported to the manufacturer and to the competent authority of the Member State in which the user is established.

### Disclaimer:

All products specifications, illustrations, drawings, images, dimensions, performance data and other information on our Instructions for Use or made available by us are subjected to change without notice and they are intended to represent no more than a general illustration of the products intended use and their features and do not constitute a warranty or representation by us that the products will conform with the same. Products that are shipped to you may vary from these images or specifications.



**APEX PULP Pte Ltd**

Company Registration No.: 200715327H  
132 Joo Seng Road #04-01. Singapore 368358  
Tel: +65 6817 8969 | Fax: +65 6636 9813  
www.apexpulp.com | sales@apexpulp.com

