

INSTRUCTIONS FOR USE

Ref: APEX-IFU-KND0950

Description	Kidney Dish 950ml Disposable Medical Pulp
Product Part Number	KND0950
Ordering Item Code	100xxxKND0950 (xxx – To be assigned upon order)
UDI-DI	95510204301448

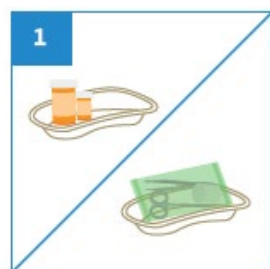
Product Image



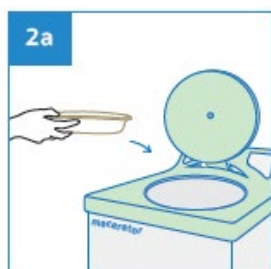
Intended Use	For patient treatment and monitoring, the Kidney Dish is made from eco-friendly biodegradable kraft material, intended for use as multi-purpose dish to carry surgical instrument, dressings, wipes, creams and other medical items.
--------------	--

Storage	Keep in a cool, dry place, away from heat, flames, and sunlight.
---------	--

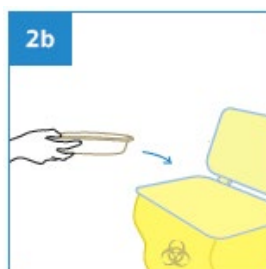
User Guide



Place medical items on Kidney Dish.



After use, dispose the empty Kidney Dish into macerator or into appropriate waste bins.



WARNING

Any serious incident related to the device must be reported to the manufacturer and to the competent authority of the Member State in which the user is established.

Disclaimer:

All products specifications, illustrations, drawings, images, dimensions, performance data and other information on our Instructions for Use or made available by us are subjected to change without notice and they are intended to represent no more than a general illustration of the products intended use and their features and do not constitute a warranty or representation by us that the products will conform with the same. Products that are shipped to you may vary from these images or specifications.



APEX PULP Pte Ltd

Company Registration No.: 200715327H
132 Joo Seng Road #04-01. Singapore 368358
Tel: +65 6817 8969 | Fax: +65 6636 9813
www.apexpulp.com | sales@apexpulp.com

