

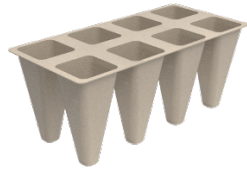
INSTRUCTIONS FOR USE

Ref: APEX-IFU-SDT0008

Description Seeding Tray 8 Cavities Disposable Agricultural Pulp

Item Code 110APPSDT0008

Product Image

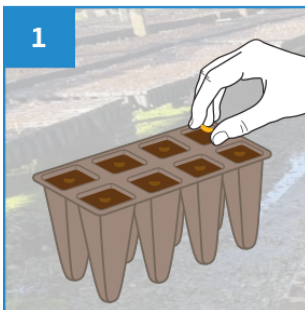


Intended Use

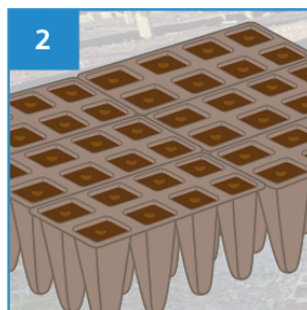
The Seeding Tray with 8 Cavities is made from eco-friendly biodegradable kraft material, intended for use as tray for germinating seeds up to vegetative stage. It is designed to help young roots absorb nutrients from the soil until the roots are strong enough to penetrate through the moulded pulps.

To transfer young and growing seedlings to larger pot, simply cut out each individual tray and transfer it to larger pot, resulting in almost 100% transfer yield.

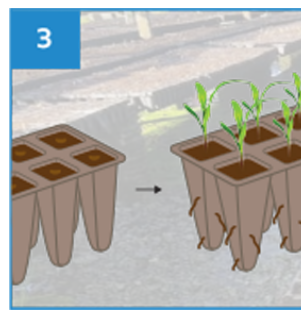
User Guide



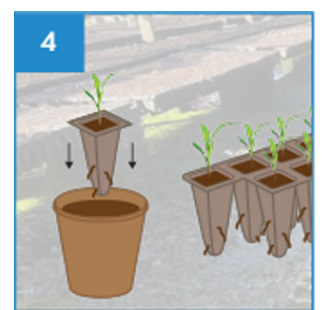
1 Fill each cavity with your mix of soil. Plant a seed into the soil for each cavity.



2 Arrange the filled trays at nursery with optimum condition for germinating.



3 Once the roots start to penetrate through the pulp, consider transferring the young seedlings to pots.



4 Separating each cavity by cutting the pulp. Transfer to larger pot directly with the pulp.

Disclaimer:

All products specifications, illustrations, drawings, images, dimensions, performance data and other information on our Instructions for Use or made available by us are subjected to change without notice and they are intended to represent no more than a general illustration of the products intended use and their features and do not constitute a warranty or representation by us that the products will conform with the same. Products that are shipped to you may vary from these images or specifications.

Rev0(0822)EN

